

# Vitalograph Micro™

Reliable, affordable spirometry testing is easier than ever with the new Vitalograph Micro™.

This compact, lightweight, handheld spirometer is not only great value but it is packed with a host of features:

- Supplied with Vitalograph Reports Software
- Configurable PDF reports for archiving or printing
- Full colour touch screen
- Clear sounds for audio feedback
- Real-time test quality prompts
- Flow/Volume and Volume/Time curves in real time
- Expandable graph views for full visualisation
- Display overlay of 3 best blows, best test and LLN
- Simple icon driven menu for ease of use
- Choice of over 40 parameters
- Pre and post bronchodilator testing options
- Predicted sets including ERS, NHANES & GLI (Global Lung Initiative)
- Removable flowhead for easy cleaning
- Up to 700 patient records stored on the device



**\$1,095**

ECO63310



**Vitalograph®**

---

LOW COST SPIROMETRY MADE SIMPLE

---



## PC-Pneumotrac with Spirotrac software

The Vitalograph Pneumotrac™ is an excellent spirometry choice when long-term storage and analysis of patient results are essential. It offers over 30 configurable parameters and storing and trending of test results.

The Vitalograph Pneumotrac features sophisticated Spirotrac Software and the unparalleled accuracy of Fleisch pneumotachograph flow measuring technology.

Now includes Global Lunge Initiative (GLI) protocols

**\$1,995**

EC77710



## copd-6 Revolutionary COPD Screener

- Identifies those at risk of COPD at the pre-symptomatic stage to allow early medical intervention
- Screens out those with normal FEV1, who therefore do not have COPD
- Displays the key parameters for clinical interpretation including obstructive index and COPD classification (stage I – IV)
- Displays FEV1, FEV6, ratio and % predicted, obstructive index
- COPD classification and lung age
- Detachable flowhead makes cleaning simple
- Designed for multi-subject use
- Uses SafeTway or Vitalograph mouthpieces

**\$259**

ECO40200  
GST Free



**i** Chronic obstructive pulmonary disease (COPD) is a lung disease in which the lung is damaged, making it hard to breathe. In COPD, the airways – the tubes that carry air in and out of your lungs – are partly obstructed, making it difficult to get air in and out.

## asma-1 Electronic Asthma Monitor

The Vitalograph asma-1 is a simple to use electronic peak flow meter that measures PEF and FEV1. It offers greater accuracy than a mechanical peak flow meter and eliminates the need for paper record cards.

- Displays % of personal best for both PEF and FEV1
- Automatically assesses test quality and stores best values
- Large, easy to read display
- Stores 600 test sessions
- Suitable for use in clinic with SafeTway mouthpieces
- Uses long life AAA batteries

**\$165**

ECO40000  
GST Free



DBA Design Award



# Download the FREE Vital Medical Supplies APP

NEW

VISIT PAGE 10 FOR MORE INFORMATION

FREE download available from:






## Vitalograph ALPHA

Performing spirometry tests could not be easier.  
Effective Spirometry – pure and simple

Simply enter the patient's age, height and gender, then select VC or FVC test. After the test series is complete, print the report on the built-in printer and/or transmit the report to your PC.

The Vitalograph ALPHA automatically selects the best test and presents real-time curve visualisation, interpretation and test quality information in a simple, clear and easy to read format.

- Dedicated all-in-one desktop unit
- Rapid and low cost testing
- Clear and bright colour screen
- Accurate Fleisch pneumotachograph
- Measures VC, FVC, FEV1, FEV1%, PEF, FEF 25-75 and more
- On-screen visualisation of volume/time and flow/volume curves
- Saves multiple pre-tests for subsequent post-testing
- CompactFlash removable memory card slot
- Presents the test information in clear, easy-to-read format
- Links to PC, via USB, with report generation software
- Fast, silent printer that prints 140 tests per roll
- Battery and mains power with integrated battery for off-site testing
- Autoclaveable flowhead
- Facility for user accuracy checks
- Use BVF, SafeTway or Vitalograph mouthpieces
- Reporting Software included
- Now includes Global Lunge Initiative (GLI) protocols

[www.vitalograph.co.uk](http://www.vitalograph.co.uk)



**LOW RUNNING COST ON CONSUMABLES**



**\$2,450**

ECO65000

## Spiro USB™

SpiroUSB™ is a revolutionary new type of Spirometer that plugs directly into the USB port of your PC, without the need for any additional docking station or data uploading. Using a Notebook computer with the SpiroUSB brings complete portability for physicians' offices or for bedside testing.

### Features:

- SpiroUSB works in just 3 easy steps: Plug in your computer to launch SPCS, click new examination, and blow into the SpiroUSB and view results.
- SpiroUSB performs open and closed-loop spirometry, pre-and post-bronchodilator testing, incentive spirometry and trending facilities.
- Child Incentive Screens available are: Bubblegum Kid, Milkshake Kid, Wolf

**\$1,495**

BIOSPIROUS

[www.http://biomedexsupport.com.au](http://biomedexsupport.com.au)



## Microlab Spirometer

Portable spirometer, with built-in printer and clear colour touch screen, optional pulse oximeter and PC software.

### Features:

- MicroLab spirometer's functions can be easily accessed using the high definition colour touch screen.
- Free downloadable bronchial provocation PC software available with full ATS/ERS protocols for challenge testing, using the MicroLab spirometer.
- Fully compliant to ATS/ERS 2005 standards.
- Fully configurable, allowing up to 41 indices to be selected including, a choice of predicted values and languages.
- Built-in high resolution printer with option to direct print to external printers using USB connection.
- Complete with all accessories in a sturdy carry case.
- Child Incentive Screens available are:  
Bubblegum Kid, Milkshake Kid, Wolf
- Memory capacity can store 2000+ patients

**\$2,895**

DEML3500S



[www.http://biomedexsupport.com.au](http://biomedexsupport.com.au)





“Effective, simple lung screening in any environment”

**PONY FX is the new generation family of portable spirometers from COSMED, representing the ideal solution for flexible lung function screening in many fields of application. Pony FX design allows easy spirometry testing without sacrificing anything to functionality.**



## Pony FX

### Desktop Spirometer

- Full spirometry testing (FVC, SVC, MVV, Pre/Post BD)
- Airway resistance by Occlusion Technique (option)
- Respiratory mechanics MIP/MEP (option)
- Oxygen saturimetry with integrated SpO2 monitor (option)
- Colour LCD display with real time graphs and embedded high speed thermal printer
- Validated turbine flowmeter
- Provided with OMNIA software for data management, real time testing and interpretation on PC

**\$2,995**

COSPFX



“Effective, simple lung screening in any environment”

**MICROQUARK is the new PC-based spirometer from COSMED that, thanks to its compact and lightweight size (77gr), represents the perfect solution for performing screening spirometry everywhere and in any conditions.**



- Full spirometry testing (FVC, SVC, MVV, Pre-Post BD, Bronchial challenge).
- Plug-and-play technology.
- Independently validated turbine flowmeter by LDS Hospital using the ATS 24 standard volume-time waveforms.
- User-friendly, beautiful software interface providing comprehensive graphical and text interpretation.
- Full Networking and multi-language environment.
- Compatible with Win 8 PRO
- (32/64), Win 7 (32/64), Win Vista
- (32/64).
- Meet latest ATS/ERS standards.

**\$1,695**

COSMQ





## CP 150 Upgrade Spirometry Option



The CP 150 lets you perform two tests with one device, to help make detection at the point of care easier and more efficient.

- Perform FVC and pre and post BD testing with automatic interpretation and reversibility analysis
- Customise report formats and screen displays to fit your needs and workflow
- Performs spirometry tests typically required for health and safety purposes including ATS and NIOSH
- Automatic lung age calculation to help with smoking cessation programs
- Integrated ambient sensors that eliminate the need for the user to find and enter values for temperature, pressure and humidity



# \$3,195

WL105660

## PC-Based SpiroPerfect™ Spirometer



See and compare accurate results from pulmonary function tests in seconds. Clearly evaluate pulmonary obstruction or restriction, increase success rates of patients who are undergoing smoking cessation, show progress, and help pediatric patients comply with test procedures. This powerful and accurate Windows® based software solution is part of the CardioPerfect Workstation suite

### Features:

- Fast, reliable pre/post bronchodilator FVC, SVC, and MVV testing with automatic interpretation and reversibility analysis
- Instantly verify quality and variability of test performance and compare previous tests using the trending tool
- Reduce risk of cross contamination with single-use disposable transducers
- Easily monitor, review, store and print on your computer with Welch Allyn CardioPerfect™
- Workstation Software
- Interface with EMR or patient management systems for onsite or offsite review of key data
- Includes Software and 3-L Calibration syringe

NB: Laptop not included

# \$2,595

WLSPIRO-S



## New Facility or upgrading your practice?

We can help you make the right decisions and bundle a special equipment package for you at a great price!

# Call 1300 557 651



### myPEF

The only web enabled peak flow meter

The myPEF peak flow meter combines high quality and attractive styling with great value. This robust and easy to clean peak flow meter conforms to the ISO standard for Peak Expiratory Flow Meters.

The myPEF is supplied with a unique ID card allowing users free access to a secure website where they can enter their PEF readings, eliminating the need for paper records and supporting data accuracy and effective asthma management. Suitable for use with any web enabled device.

**\$42**

EC43900  
GST Free



### Single Patient Use Peak Flow Meter

- Suitable for adults and children, one model for all
- Single patient use only

**\$15.50**

ECO43608  
GST Free



### Breath-Alert™ Peak Flow Meter

- Individually tested for proven reliability
- Easy to use
- Meets all Australia and New Zealand standards



**\$22**

AE395-001  
GST Free

Allersearch

**ECOMED**

*Technical*

Serving The HealthCare Industry

[www.ecomedtechnical.com.au](http://www.ecomedtechnical.com.au)

**NATIONAL COVERAGE FOR SERVICING**

**For service or repairs  
Call 1800 675 432**

For further information contact our Vital customer service team on 1300 557 651  
**See page 45 of this catalogue for more details on Ecomed Technical**



## Bacterial Viral Filter (BVF) Mouthpieces



- At-risk subjects must use a filter or disinfect whole breathing circuit
- Minimise your infection risk between subjects
- The ultimate in cross-contamination efficiency during LF testing
- Dependable control of cross infection with low cost-per-test

When inspiratory and expiratory testing, the Bacterial/ Viral Filter should be used. Designed specially for pulmonary function testing, the low back-pressure filter has a bacterial and viral cross-contamination reduction efficiency of 99.99%.



Code	Equipment	Unit	Inner Ø mm	Outer Ø mm	Price
EC28501	Bact/Viral Filter Grey	Box/100	26.95-27.05mm	30.15-30.55mm	<b>\$175.00</b>
EC28768	Bact/Viral Filter Grey	Box/50	23.10-23.80mm	26.10-28.15mm	<b>\$99.00</b>
BIOS2FILTR	Cosmed Pony	Box/50	28.5mm	30.0mm	<b>\$149.00</b>

## Standard Cardboard Mouthpieces

Code	Equipment	Unit	Inner Ø mm	Outer Ø mm	Length	Price
MLMOUTHVA	Vitalograph Adult / Peak Flow	Box/200	27.5mm	30mm	70mm	<b>\$49.00</b>
MLMOUTHPO	Cosmed Pony Adult	Box/200	28.5mm	30mm	65mm	<b>\$59.00</b>
MLMOUTHVP	Pony/Vitalograph Child	Box/200	19.5mm	22mm	75mm	<b>\$49.00</b>

## Mouthpieces QRS Spirocard

CRI500026	Box/50	<b>\$249.00</b>
-----------	--------	-----------------



## One-way Valve Mouthpieces

The low cost, low resistance SafeTway® mouthpiece allows entry of expired air into the measuring system, but not back to the test subject. This simple, yet effective patented design prevents concerns of accidental inhalation of pathogens.

The SafeTway is an inexpensive alternative to the bacterial viral filter for expiratory only testing.

inner Ø 27mm  
outer Ø 30mm

Box/200

**\$149**  
FPV20-242

safetway®



## Carefusion Accessories

BIMP500	Adult Mouthpieces	Box/250	<b>\$119.00</b>
---------	-------------------	---------	-----------------

BI892381	Microguard Filters	Box/50	<b>\$149.00</b>
----------	--------------------	--------	-----------------

## Paper For Spirometers

BIOMICRLAB	Paper for Microlab Spiro 110mm	<b>\$12.50</b>
BBP400	Paper for Pony Graphic 57mm	<b>\$5.95</b>
BBP425	Paper For Pony FX 112mmx15m	<b>\$7.50</b>
MF714910	Paper 110mm Fukuda ST250/Microlab 3300	<b>\$13.50</b>
MF747150	Paper 57mm Fukuda ST95	<b>\$7.95</b>
EC66149	Paper for Vitalograph Alpha	<b>\$15.95</b>

## Adaptor for Peak Flow Meter

EC29805	<b>\$2.90</b>
---------	---------------



## WelchAllyn® Spirometry Accessories

WL703418	Flow Transducers	Bx/25	<b>\$149.00</b>
WL703419	Flow Transducers	Bx/100	<b>\$395.00</b>
WL56130	Spirometer Nose Clips	Bx/25	<b>\$65.00</b>
WL720706	Flow Transducers GEN4 Xducers	Box/100	<b>\$305.00</b>
WL720705	Flow Transducers GEN4 Xducers	Box/25	<b>\$109.00</b>

\*GEN4 Xducers only work with CP 150 Upgrade Spirometry

# CAMP QUALITY'S KIDS' GUIDE TO CANCER APP



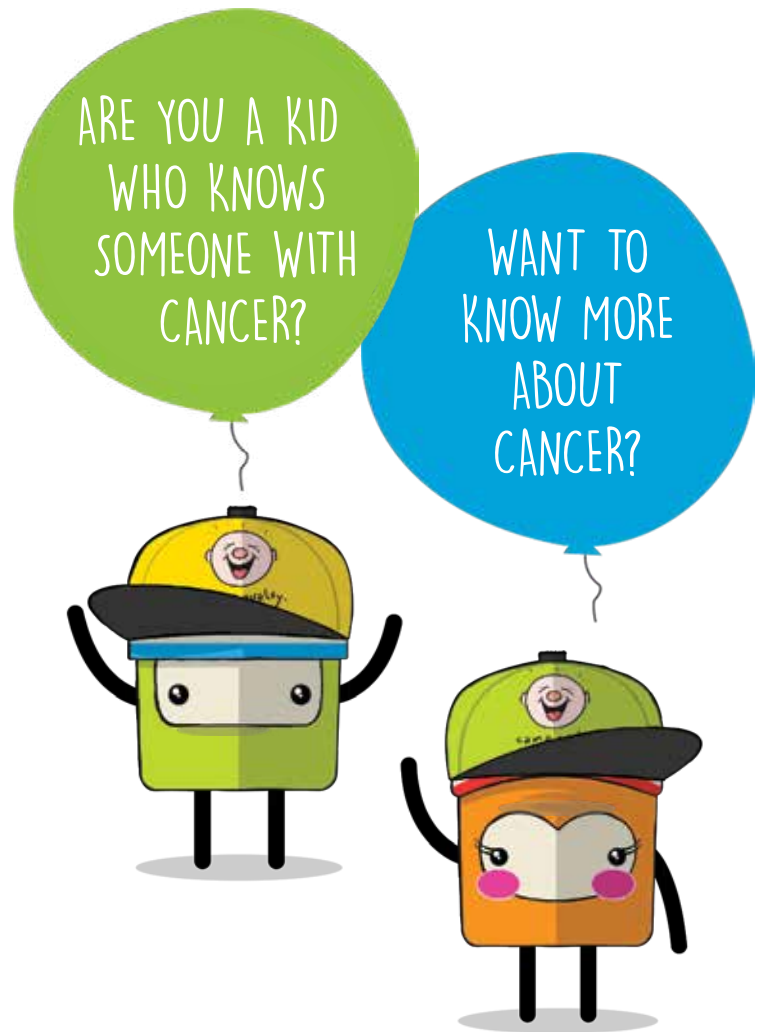
CAMP QUALITY'S KIDS' GUIDE TO CANCER APP IS THE FIRST APP IN THE WORLD CREATED FOR KIDS LIVING WITH CANCER, THEIR SIBLINGS, AND KIDS WHO HAVE A DIAGNOSED OR BEREAVED PARENT OR PEER.

THE APP IS AN INTERACTIVE, EDUCATIONAL RESOURCE FILLED WITH AGE APPROPRIATE INFORMATION ABOUT CANCER, HOSPITALS, MEDICINES, TREATMENTS AND PEOPLE WHO HELP.

RECENTLY, CAMP QUALITY'S KIDS' GUIDE TO CANCER APP WON "BEST IN CLASS" AT THE 2015 IMA AWARDS — WHICH IS THEIR HIGHEST HONOUR!

**DOWNLOAD FREE TODAY ON YOUR  
SMARTPHONE AND TABLET**

proudly supported by:  
**NEWCASTLE PERMANENT  
CHARITABLE  
FOUNDATION**



## CAMPQUALITY.ORG.AU/KIDSGUIDETOCANCER

to learn more about the essential support services Camp Quality provide to kids with cancer aged 0-13 years and their families.