

## HEINE CUBE system

Wireless Image & data management  
for up to 10 digital dermatoscopes.



Manages images, saves time and  
improves practice workflow.

# WIN 1: Clever INVEST- MENT.



**GREAT FOR DOCTORS, GROUP PRACTICES  
OR DERMATOLOGY CLINICS.**

Together with the HEINE iC1 Dermatoscope and the smart software, the HEINE Cube system is the innovative data management solution for taking a series of pictures of patients' skin over time. It is also the result of an in-depth analysis of the highly personal work processes applied by many dermatologists worldwide. The HEINE Cube system helps doctors to detect skin cancer at an early stage. There are no cables and there's no need to deal with the inconvenience of going back and forth between the patient and computer. There are lots of smart image-comparing ideas and each work step is intuitive and logical, but completely individual at the same time.

Unlike other systems, a HEINE Cube can be simultaneously used by one or more doctors over a wireless network. Between one and ten HEINE iC1 Dermatoscopes and an unlimited number of tablets, computers and workstations can communicate wirelessly and in parallel with just one Cube.

This ensures that practices and hospitals have complete flexibility in relation to room occupancy, reduce waiting times and improve overall patient and practice flow.

The investment in a HEINE Cube system is even more beneficial when multiple iC1 Dermatoscopes are used across multiple treatment rooms compared to rival products.

# WIN 2: Significant TIME SAVINGS.



**GREAT FOR MEDICAL ASSISTANTS.**

Not only doctors, but also medical assistants stand to save a considerable amount of time. The HEINE Cube system accesses the relevant data directly from the digital patient file and from your patient management system (PMS) at the touch of a button.

By automating this process your team will save on time, work and also reduce the risk of error from repeatedly inputting patient data.

This makes practice and hospital workflow more efficient, flexible and ultimately benefits the entire practice team.

# WIN 3: All-round TREAT- MENT.



## GREAT FOR PATIENTS.

The pictures are available in real time as soon as they've been taken and can be discussed together with the patient. Either directly on an iPhone®, on a tablet over a wireless network or on a monitor.

The “comparison assistant” is a special “before and after” function of the Cube System. Thus educating your patients becomes very easy and highlights the importance of continuously monitoring suspicious pigmented skin lesions.

On the subject of data protection: all data and images are as secure in the HEINE Cube system as in Fort Knox. They are only stored locally on the password protected Cube system and not on the iPhone or in the ‘cloud’. However, they can be taken by the patient on a data storage device or in printed form.

# WIN 4: Endless POSSIBILI- TIES.



## GREAT FOR AESTHETIC AND WOUND DOCUMENTATIONS.

Laser or intense pulsed light (IPL) skin treatments can reduce or completely remove birthmarks, wrinkles, scars, excessive pigmentation, tattoos, stretch marks and much more. In most cases, however, multiple sessions are required, and the positive skin changes gradually become visible.

Some patients may become frustrated if changes are not immediately noticeable. The HEINE Cube system can improve patient satisfaction by providing simple, easy to understand documented images of the progress.

The HEINE Cube system therefore contributes considerably to increasing the likelihood of the patient not discontinuing treatment before an ideal result is achieved.



# HEINE Cube AND iC1 Dermatoscope: UNBEATABLE together.



LED<sup>HQ</sup>

LED NOW IN HEINE QUALITY.

## SHARP, SHARPER, SHARPEST.

Razor-sharp images. Due to our precise aspherical optical system and the 12-megapixel image quality when using an iPhone from version 6s onwards\*.

## LARGE, LARGER, LARGEST.

Up to 40x digital magnification will allow you to see even the smallest detail.

## THERE'S LED. AND THERE'S LED<sup>HQ</sup>.

HEINE has set a new standard which maintains that only the best is good enough, from the selection of materials to processing, from light intensity and thermal management to a colour rendering index as high as possible. That's what we call LED in HEINE Quality – or LED<sup>HQ</sup>.

## DETECT THE BLINK SIGN USING THE TOGGLE FUNCTION.

Switch between polarised and non-polarised light at the touch of a button. This makes crystalline structures a great deal clearer.

## A SMARTPHONE WITH AN EXCEPTIONAL CAMERA AND HIGH-QUALITY DISPLAY.

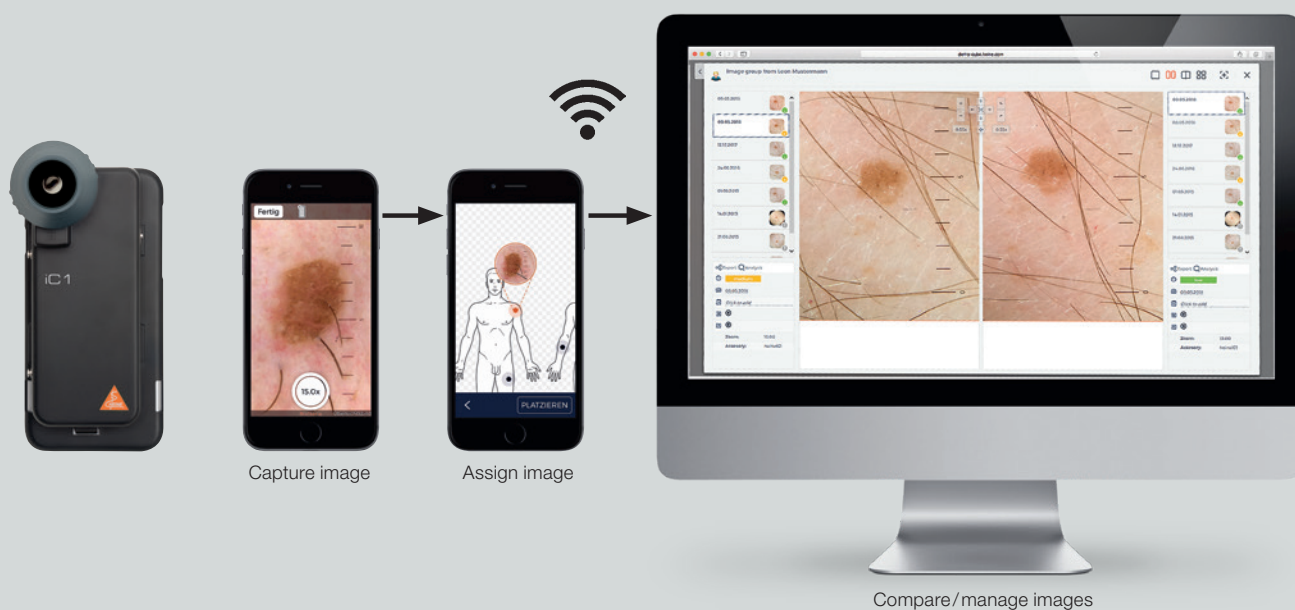
We have chosen what we consider to be the best camera, the highest-resolution display and the most advanced touch screen technology. We chose the iPhone as the camera for the iC1 Dermatoscope based on qualitative, user-oriented and cost criteria.

## PLUG IN & WORK ON.

It's as easy as connecting a new smartphone to a Wi-Fi network. Simply turn on the Cube, enter the login details, install the free app on the iPhone, connect it to the iC1 Dermatoscope, and you can get started.

\* Apple, the Apple logo and iPhone are trademarks of Apple Inc. registered in the USA and other countries. The App Store is a service mark of Apple Inc.

# HEINE Cube system: Skin **SCREENING** made **FAST**, **FLEXIBLE** and **INTUITIVE**.



**OUR DEVELOPERS HAVE WORKED VERY HARD TO MAKE YOUR WORK EASIER.**

## **1 PRACTICAL WORKLISTS.**

Patient data is copied directly to the Cube system at the touch of a button from your PMS to a daily list or work list. The doctor can then access the digital patient file on any computer based on the order of appointments. Daily lists can be created for different treatment rooms as well as for different doctors.

## **2 EASY IMAGE ASSIGNMENT.**

Whether you want to take overview, individual or continuous images, and comment on them immediately or later, it's up to you. The overview function is unique. For example, if you create an image of the upper body of a patient, you can easily place detailed photos on this overview image.

## **3 CHECK-UP WIZARD.**

This exclusive feature allows for a fast review of pictures taken during previous appointments, giving you the ability to prioritise suspect pigmented skin lesions.

## **4 FAST, WIRELESS TRANSFER.**

When you take a picture, it is instantly transferred to the HEINE Cube over a wireless network. It's then available on the computer or tablet straight after being taken – and is even accessible to other users too.

## **5 COMPARISON ASSISTANT.**

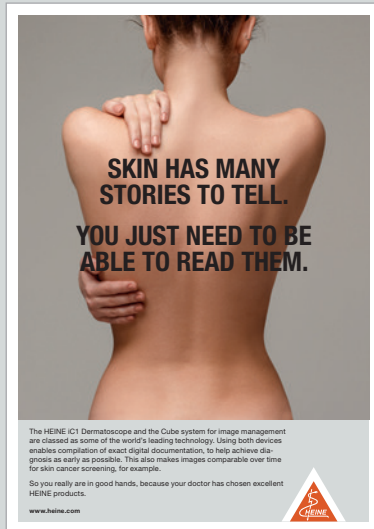
Regardless of how you like to review images, the HEINE Cube has it covered. Position side-by-side or view up to four images simultaneously to illustrate progression over time. Place one image over another to use the "slide-over" or the "contour overlay" functions. The possibilities are endless.



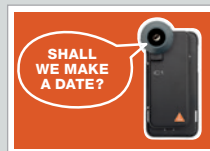
# Your patients will not see much of the HEINE Cube. But they will see our communication.

The starter package includes emotional posters, a brochure with key information and postcards for arranging appointments (to be handed out or sent out via PDF or post) for reception areas or waiting areas.

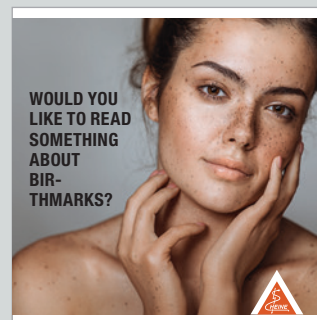
If you need material for your website, publications or events, please use the package with copyright-free photos and text, which we will be happy to make available to you. If you'd like more information, please don't hesitate to send an email to [cube@heine.com](mailto:cube@heine.com).



Poster for your waiting area



Appointment postcard



Information brochure for your patients

## QUALITY made in GERMANY.

As a global leader in the manufacture of primary diagnostic instruments with over 500 employees, HEINE Optotechnik has been a 100% family owned and managed company for more than 70 years. We continue to develop and manufacture HEINE instruments at our facilities in Germany, where we combine decades-long experience and craftsmanship with the most modern manufacturing technologies.

We are represented in over 120 countries around the world, with subsidiaries in Australia, the US and Switzerland as well as 3,000 representatives, importers and specialist dealers.

We look forward to hearing from you – and would like to know more about your opinions, desires and suggestions regarding our products.

**HEINE Optotechnik GmbH & Co. KG**  
Kientalstr. 7, 82211 Herrsching, Germany  
Tel. +49 (0) 8152-38 0, Fax +49 (0) 8152-382 02  
E-Mail: [info@heine.com](mailto:info@heine.com), [www.heine.com](http://www.heine.com)



08/19. A-000.00.271 e

